



**Installation Instructions – JMS PedalMAX Kit P/N PX-5000-1015GM  
2004-2015 GM Drive-By-Wire Electronic Throttle Enhancement Device  
Note: Designed for GM Cars.....use part number PX-5000-1015GMT for GM Trucks.**

**Included in the PedalMAX kit:**

- (1) PedalMAX assembly
- (1) 4-pin RED de-sensitizing throttle plug
- (2) Cable ties
- (1) Small Screwdriver

Please read the complete installation instructions before attempting to install this product. PedalMAX will increase the torque and responsiveness of the OEM drive-by-wire throttle assembly. The PedalMAX unit is designed to be mounted inside the vehicle cabin, under the dash near the accelerator pedal position sensor. PedalMAX should not come into direct or prolonged contact with water or extreme engine heat (+250F).



**Connect the Assembly:** Attach the black PedalMAX device to the wiring harness. Plug it into the 25-pin connector and securing it with the two small screws. Use the supplied screwdriver.



**Important:** Disconnect the negative terminal of the battery before installing this product. If you do not disconnect the battery the factory computer will not learn the correct starting pedal position.

**Step 1:** Locate the pedal position sensor assembly at the top of the accelerator pedal.



**Step 2:** Unplug the wiring harness from the pedal position sensor.

**Note:** To separate the connector from the sensor: slide back the GREY locking tab on the harness connector and then press the black tab down to remove the connector.

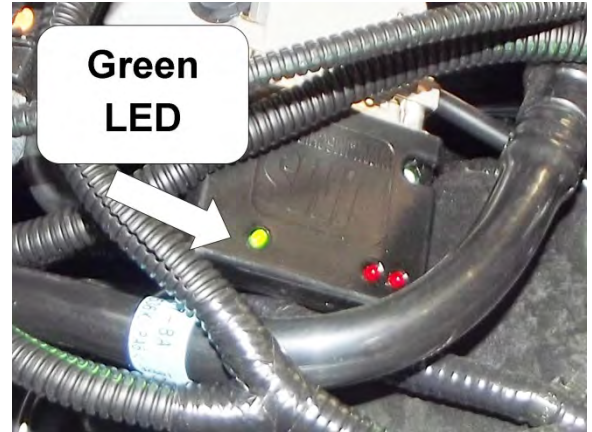


**Step 3:** Plug the PedalMAX device in-line between the pedal position sensor and OE wiring harness by connecting the male and female PedalMAX connectors to the Original Factory connector and sensor.

**Step 4:** Secure the PedalMAX unit using the (2) supplied cable ties. The device should not be hanging loosely or unsecured. Do not attach or mount to any moving assemblies such as the steering column.

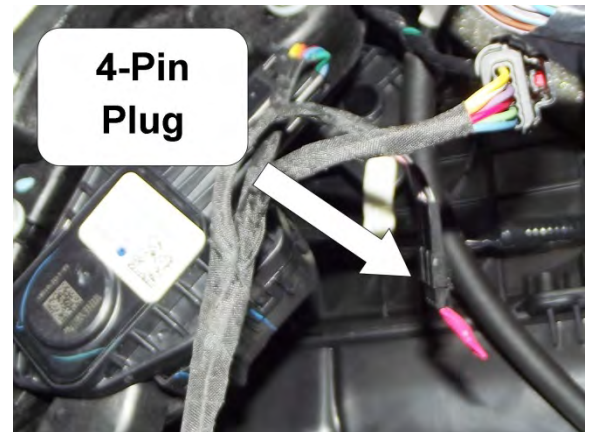


**Step 5:** Test the device – Once the device is installed and secured, insert the ignition key, and start the vehicle. Let the vehicle idle, and look at the device to make sure the green LED is illuminated, which alerts you that the device is active and functioning.



**Step 6:** Test drive the vehicle – Drive the vehicle under normal conditions. You should notice a significant improvement in throttle responsiveness and acceleration.

**RED Plug:** The PedalMAX device is pre-configured to provide the maximum increase in throttle response. If this amount of increase is too aggressive for your driving style, you can connect the supplied 4-pin RED de-sensitizing plug into the 4-pin connector on the device. The RED de-sensitizing plug will decrease the amount of increased throttle response to about 60% of the maximum setting for a less-aggressive response.



**Optional Control Accessory:** The optional single pedal knob (P/N BX-6999-SINGLE) is designed to plug in to the 4-pin connector and over-ride the pre-configured throttle response settings. With this option, you have ultimate control over the sensitivity with a range of 0% increase to the 100% maximum increase, based on the position of the control knob.



## Notes and Troubleshooting:

- Check Engine Light - If you experience a check engine light and have no pedal response after starting the vehicle immediately following installation, and the green LED is illuminated, turn the key back to the off position, remove the ignition key. Disconnect the negative battery terminal, wait 30 seconds before reconnecting and restart the vehicle. This should eliminate the check engine light and restore pedal response.
- NO LED's (Unit does not function) – Re-Check the connectors at the pedal position sensor and verify that the green LED is illuminated when the vehicle is powered on or running.

## Using PedalMAX in-line with BoostMAX:

PedalMAX and BoostMAX have been pre-engineered to work together for additional performance enhancement on GM Ecotech engines. In this scenario, PedalMAX will be installed in-line between the BoostMAX device and the pedal position sensor. The installation process is the same as noted above, except the PedalMAX harness will connect to the BoostMAX output connector and the pedal position sensor. Using PedalMAX in conjunction with BoostMAX will add additional low-end horsepower and torque, along with an increase in throttle responsiveness.



## Product Notes:

2008 – 2015 GM cars/crossovers must use PedalMAX pn: **PX-5000-1015GMT.**

2012 - 2016 GM vehicles with the LSA engine must use PedalMAX pn: **PX-5000-1415GM**

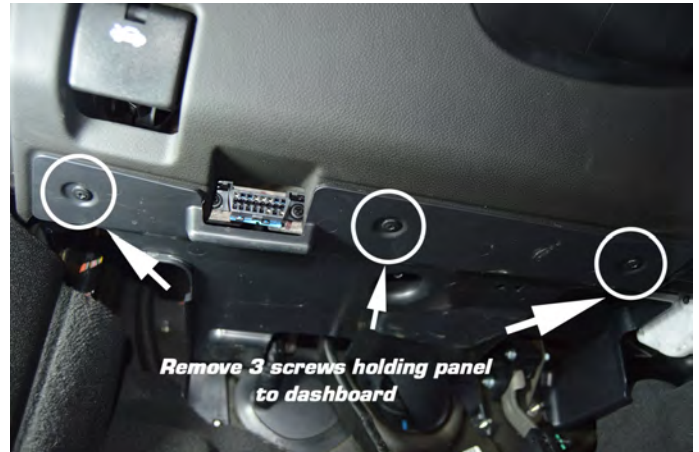
Please visit our web site for a list of vehicles supported by each part number.

## PX-5000-1015GM Supports the Following Vehicles (cars/crossovers):

- 2008-2015 Buick Enclave
- 2011-2015 Cadillac CTS Coupe
- 2008-2015 Cadillac CTS Sedan
- 2010-2015 Cadillac CTS Wagon
- 2006-2011 Cadillac DTS
- 2005-2012 Cadillac STS
- 2004-2009 Cadillac XLR
- 2010-2015 Chevrolet Camaro
- 2008-2013 Chevrolet Corvette
- 2008-2015 Chevrolet Equinox
- 2008-2013 Chevrolet Impala
- 2009-2013 Chevrolet Traverse
- 2008-2013 GMC Acadia
- 2010-2015 GMC Terrain

**Installation Addendum – JMS PedalMAX Kit P/N PX-5000-1015GM  
2014-2015 Cadillac CTS**

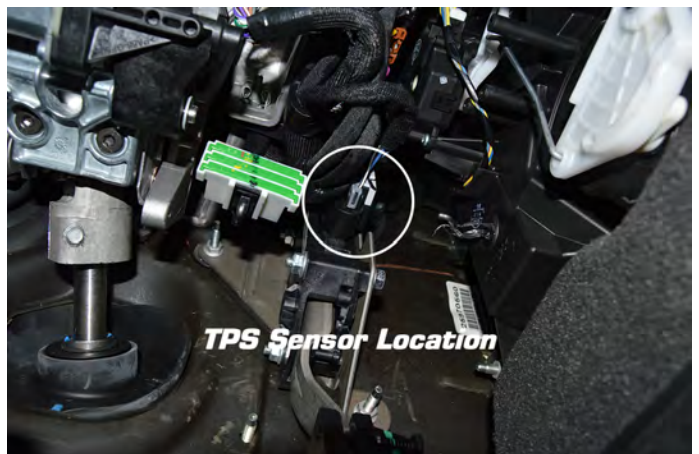
**STEP 1:** Remove the 3 Philips head screws holding the lower panel to the dashboard.



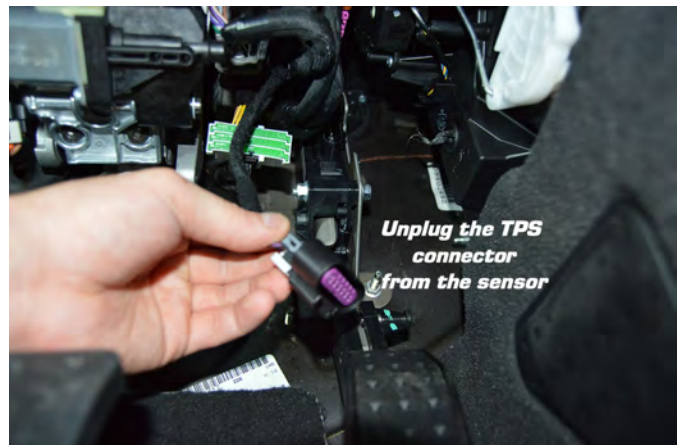
**Step 2:** Pull the two back tabs attached to the lower panel toward you to remove them from the mounting studs



**STEP 3:** Locate the TPS Sensor. It is located at the top of the gas pedal motor.



**Step 4:** Disconnect the TPS Connector from the sensor. Note that you will have to pull back on the grey lock clip in order to unplug the connector.



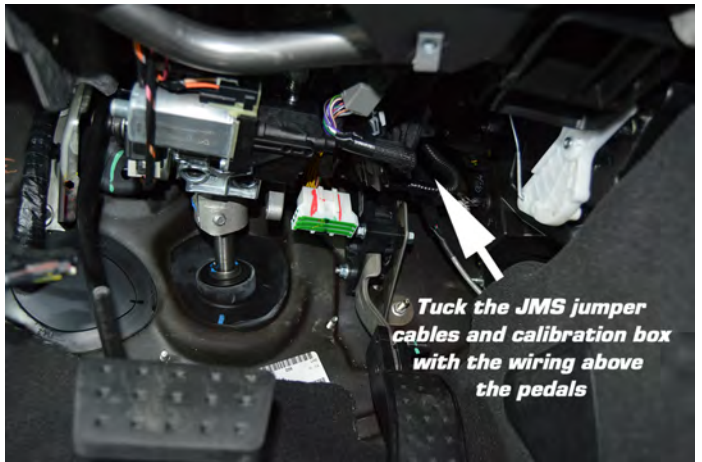
**Step 5:** Plug the female end of the JMS jumper harness into the TPS connector. Plug the male end of the JMS jumper harness into the TPS sensor



**Step 6:** ONLY IF YOU ARE INSTALLING THE JMS ADJUSTABLE DIAL. Connect the female end of the JMS adjustable dial connector into the four pin connector attached to the JMS jumper harness. If you are not using this dial, connect the four pin cap (product F on the component picture shown on page 1) to the four pin connector on the jumper harness.



**Step 7:** Tuck the JMS module the opening above the TPS harness. Use the provided zip ties to ensure it doesn't fall out of place.



**Step 8:** Re-install the lower panel to the dash. Slide the two clips back over the threaded mounting studs, and then thread the Philips head screws back into place.

